



***WE PROMOTE BREEDING !
WE SUPPORT BREEDING!***

QAZI ASFAR: +92 332 8087165

WWW.QAZISCATTLE.COM
INFO@QAZISCATTLE.COM

ANMOL



Anmol

Breed Nobal V8 Brahman (Lal Nukra)

Anmol is from the blood line of Nobal V8 breed. born from Brahman F2 mother and nobal V8 semen. he have strong joints and legs and brown nose which makes him unique.

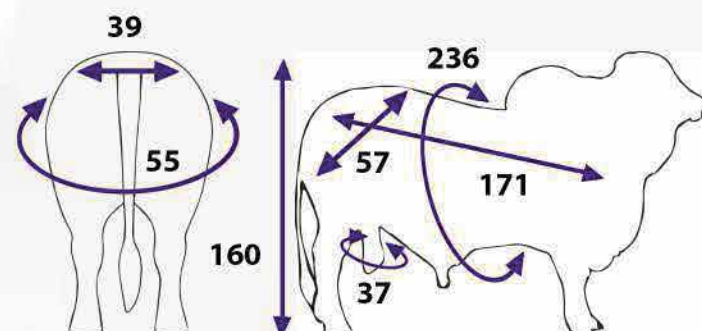
www.qaziscattle.com

GENETIC EVALUATION 2019 - ASOCEBU COLOMBIA

	PN	PD	P 12M	P 18M	HM	HM 4M	I.G.T.	AOL	GD
D.E.R	0.2	2.7	4.3	2.2	2.1	1.0	1.4	0.8	0.1
EXA (%)	24	21	20	20	18	19		18	18

Avg. Daily Weight Gain (g)	986
Avg. Birth Weight (Kg)	35
Avg. Weaning Weight (Kg)	274
Avg. Yearling Weight (Kg)	457
Avg. Mature Body Weight (Kg)	1,006
Avg. Height of Mature Animals (cm)	145
Avg. Carcase Yield (Kg)	627
Avg. Dressing Percentage (%)	57

BOVINOMETRY DIAGRAM BULL



BABLU



Bablu

Breed: Rojo Wiskey Bloodline

bablu is a brahman bull born from brahman F2 mother and rojo wiskey semen. It has very thick strong joints and huge structure. Its semen results are very out class.

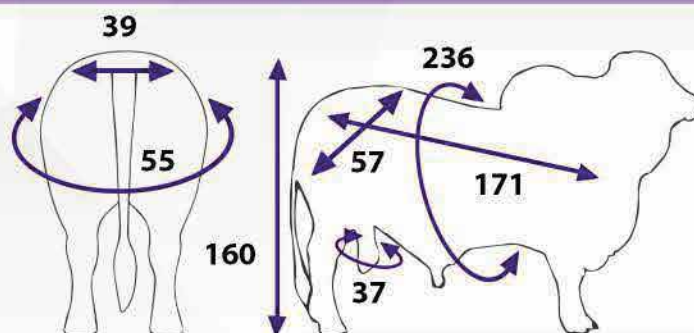
www.qaziscattle.com

GENETIC EVALUATION 2019 - ASOCEBU COLOMBIA

	PN	PD	P 12M	P 18M	HM	HM 4M	L.G.T.	AOL	GD
D.E.P.	0.2	0.7	4.3	2.2	2.1	1.0	1.4	0.8	0.1
EXA (%)	24	21	20	20	18	19		18	18

Avg. Daily Weight Gain (g)	986
Avg. Birth Weight (Kg)	35
Avg. Weaning Weight (Kg)	274
Avg. Yearling Weight (Kg)	457
Avg. Mature Body Weight (Kg)	1,006
Avg. Height of Mature Animals (cm)	145
Avg. Carcase Yield (Kg)	627
Avg. Dressing Percentage (%)	57

BOVINOMETRY DIAGRAM BULL



BODYBUILDER



Bodybuilder

Breed: Belgium Blue

The Belgian Blue is a large sized animal with rounded outline and prominent muscles. The shoulder, back, loin and rump are heavily muscled. The back is straight, rump is sloping, tail set is prominent and skin is fine. It has fine but strong legs and walks easily.



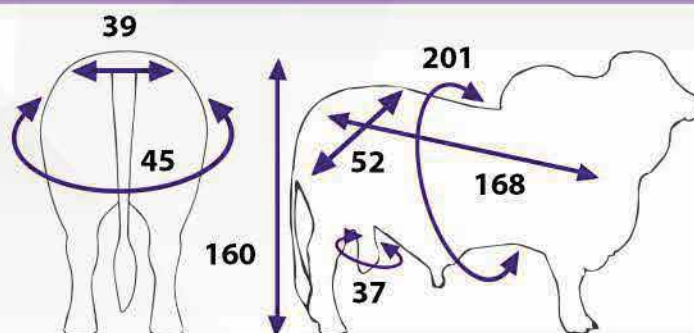
www.qaziscattle.com

GENETIC EVALUATION 2019 - ASOCEBU COLOMBIA

	PN	PD	P 12M	P 18M	HM	HM 4M	L.G.T.	AOL	GD
D.E.R.	0.2	2.7	4.3	2.2	2.1	1.0	1.4	0.8	0.1
EXA (%)	24	21	20	20	18	19		18	18

Avg. Daily Weight Gain (g)	986
Avg. Birth Weight (Kg)	35
Avg. Weaning Weight (Kg)	274
Avg. Yearling Weight (Kg)	457
Avg. Mature Body Weight (Kg)	1,006
Avg. Height of Mature Animals (cm)	145
Avg. Carcase Yield (Kg)	627
Avg. Dressing Percentage (%)	57

BOVINOMETRY DIAGRAM BULL



BLACK COBRA



Black Cobra

Bree: Black Brahman Cross Angus

Black cobra Is one of its kind. which was born from Angus cow and Brahman Bull. It has huge structure and strong joints and legs



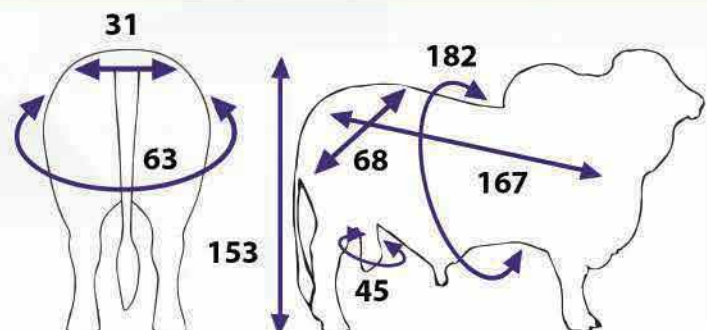
www.qaziscattle.com

GENETIC EVALUATION 2019 - ASOCEBU COLOMBIA

	PN	PD	P.12M	P.18M	HM	HM-4M	I.G.T.	AOL	GD
D.E.P.	0.3	2.7	4.3	-2.2	-2.1	1.0	1.4	0.8	0.1
EXA (%)	24	21	20	20	18	19		18	18

Avg. Daily Weight Gain (g)	986
Avg. Birth Weight (Kg)	35
Avg. Weaning Weight (Kg)	274
Avg. Yearling Weight (Kg)	457
Avg. Mature Body Weight (Kg)	1,006
Avg. Height of Mature Animals (cm)	145
Avg. Carcase Yield (Kg)	627
Avg. Dressing Percentage (%)	57

BOVINOMETRY DIAGRAM BULL



BLACK PINTO



Black Pinto

Breed: Holstein-Brahman Cross

Black Pinto is a huge Bull. As its a cross breed of 2 huge breeds it self

Sire: Brahman Bull

Dam: holstein Cow

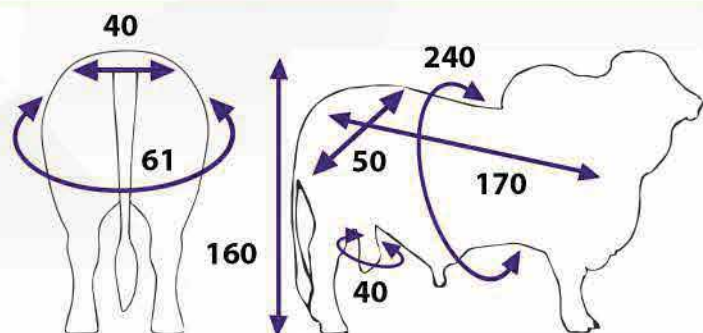
www.qaziscattle.com

GENETIC EVALUATION 2019 - ASOCEBU COLOMBIA

	PN	PD	P 12M	P 18M	HM	HM 4M	L.G.T.	AOL	GD
D.E.R	0.2	2.7	4.3	2.2	2.1	1.0	1.4	0.8	0.1
EXA (%)	24	21	20	20	18	19		18	18

Avg. Daily Weight Gain (g)	986
Avg. Birth Weight (Kg)	35
Avg. Weaning Weight (Kg)	274
Avg. Yearling Weight (Kg)	457
Avg. Mature Body Weight (Kg)	1,006
Avg. Height of Mature Animals (cm)	145
Avg. Carcase Yield (Kg)	627
Avg. Dressing Percentage (%)	57

BOVINOMETRY DIAGRAM BULL



CHARCOL B1



Charcol B1

Breed: Brangus

Pure Brangus bull imported
from Australia

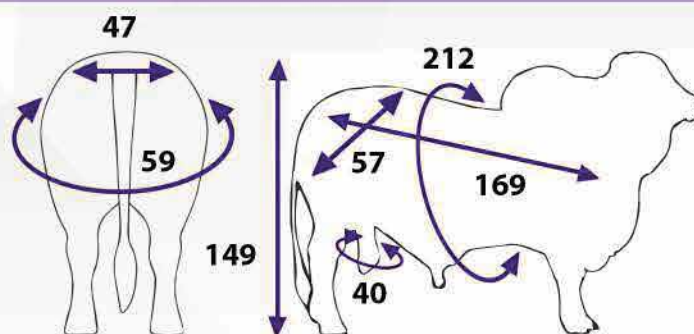
www.qaziscattle.com

GENETIC EVALUATION 2019 - ASOCEBU COLOMBIA

	PN	PD	P 12M	P 18M	HM	HM 4M	L.G.T.	AOL	GD
D.E.R	0.2	5.7	4.3	2.2	2.1	1.0	1.4	0.8	0.1
EXA (%)	24	21	20	20	18	19		18	18

Avg. Daily Weight Gain (g)	986
Avg. Birth Weight (Kg)	35
Avg. Weaning Weight (Kg)	274
Avg. Yearling Weight (Kg)	457
Avg. Mature Body Weight (Kg)	1,006
Avg. Height of Mature Animals (cm)	145
Avg. Carcase Yield (Kg)	627
Avg. Dressing Percentage (%)	57

BOVINOMETRY DIAGRAM BULL



CHARCOL B2



Charcol B2 Breed: Brangies

Charcole B2 is also imported from Australia this Bull look alike B1 the different is of length.

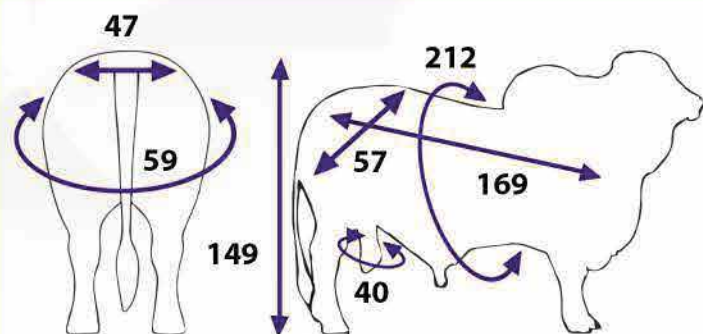
www.qaziscattle.com

GENETIC EVALUATION 2019 - ASOCEBU COLOMBIA

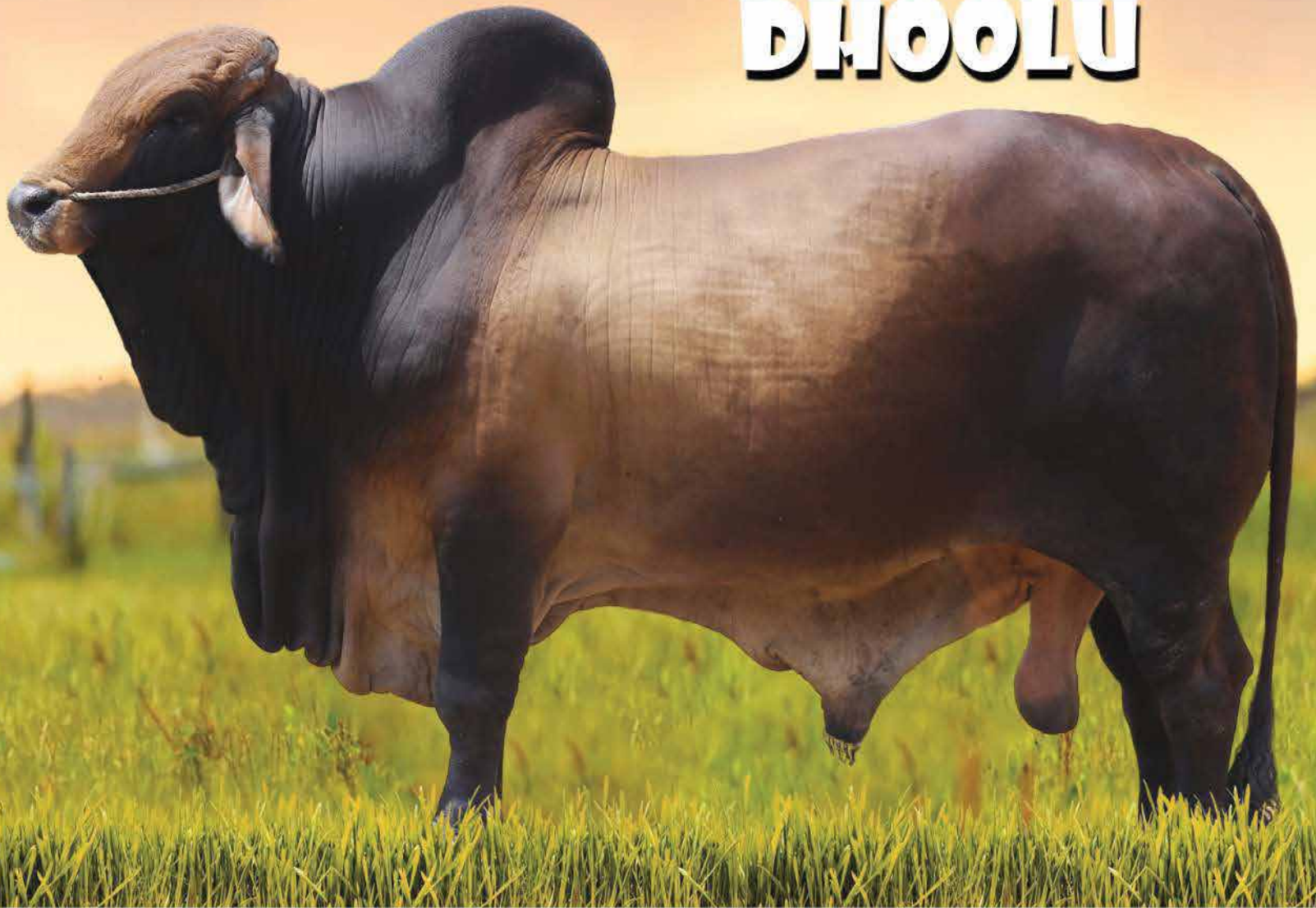
	PN	PD	P 12M	P 18M	HM	HM 4M	L.G.T.	AOL	GD
D.E.R	0.2	5.7	4.3	3.2	2.1	1.0	1.4	0.8	0.1
EXA (%)	24	21	20	20	18	19		18	18

Avg. Daily Weight Gain (g)	986
Avg. Birth Weight (Kg)	35
Avg. Weaning Weight (Kg)	274
Avg. Yearling Weight (Kg)	457
Avg. Mature Body Weight (Kg)	1,006
Avg. Height of Mature Animals (cm)	145
Avg. Carcase Yield (Kg)	627
Avg. Dressing Percentage (%)	57

BOVINOMETRY DIAGRAM BULL



DHOOLU



Dhoolu

Breed: Rolo Brahman Blood Line

Dhoolu is a Brahman Bull having huge body structure and short innocent face. Born from a Brahman Cow and Brahman Bull Rolo

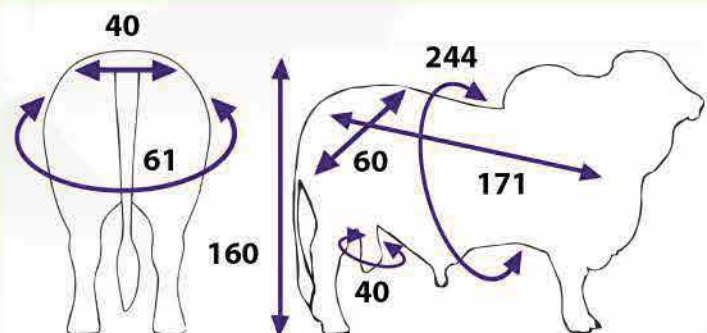
www.qaziscattle.com

GENETIC EVALUATION 2019 - ASOCEBU COLOMBIA

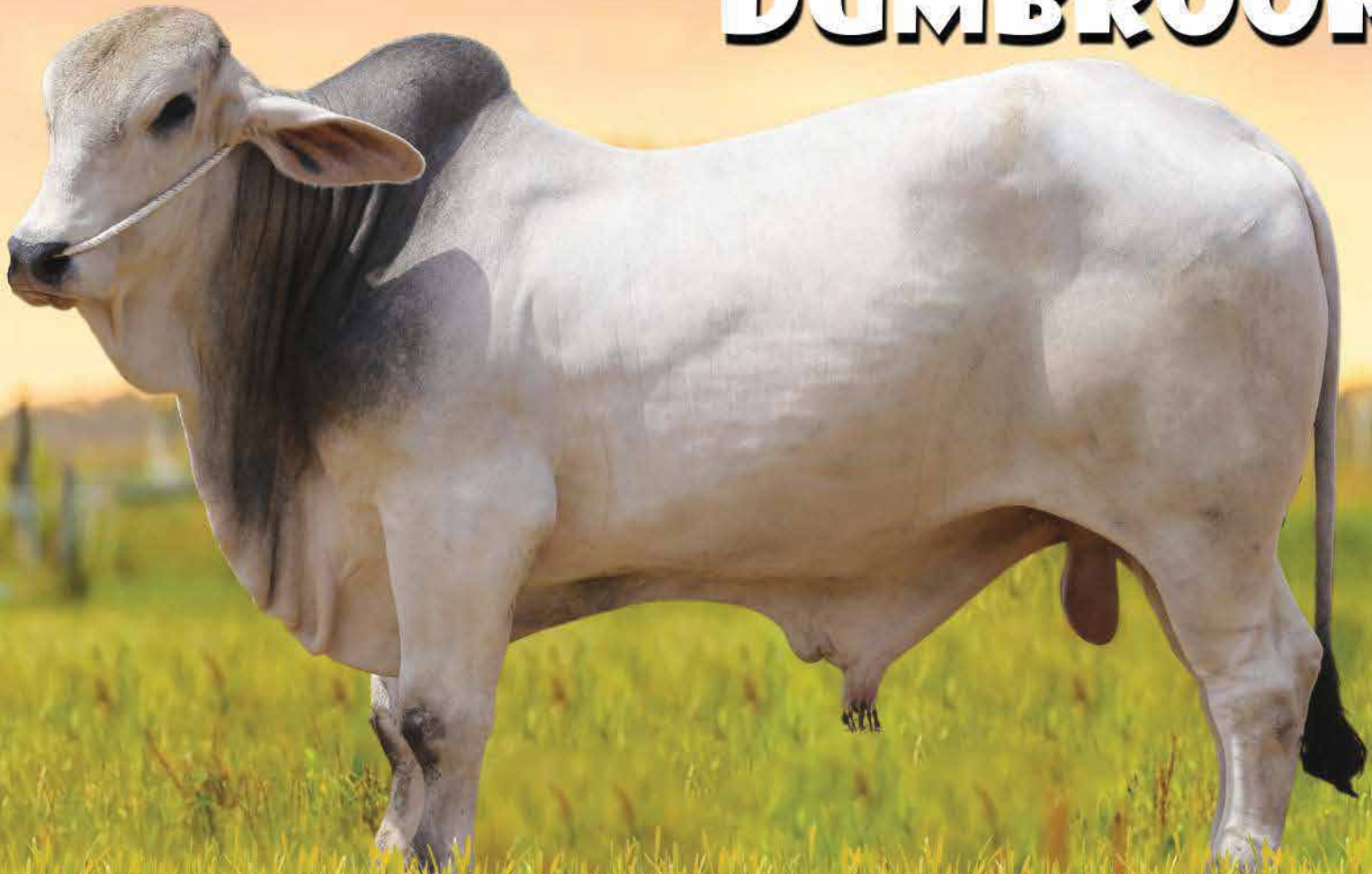
	PN	PD	P 12M	P 18M	HM	HM 4M	L.G.T.	AOL	GD
D.E.R	0.2	2.7	4.3	2.2	2.1	1.0	1.4	0.8	0.1
EXA (%)	24	21	20	20	18	19		18	18

Avg. Daily Weight Gain (g)	986
Avg. Birth Weight (Kg)	35
Avg. Weaning Weight (Kg)	274
Avg. Yearling Weight (Kg)	457
Avg. Mature Body Weight (Kg)	1,006
Avg. Height of Mature Animals (cm)	145
Avg. Carcase Yield (Kg)	627
Avg. Dressing Percentage (%)	57

BOVINOMETRY DIAGRAM BULL



DUMBROOH



Dumbrooh

Breed: Sibbi Brahman Cross

Dumbrooh is cross breed bull. Sibbi bhagnari and Brahman cow. It is good in structure and size.

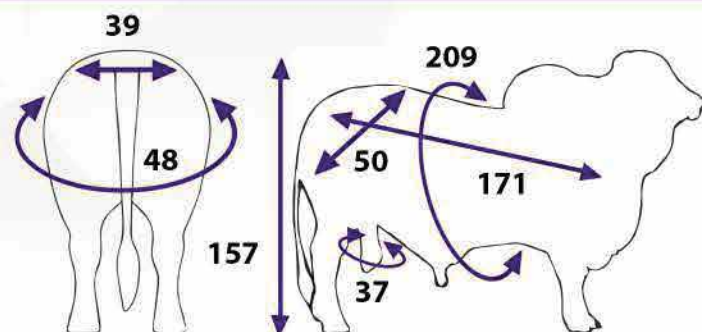
www.qaziscattle.com

GENETIC EVALUATION 2019 - ASOCEBU COLOMBIA

	PN	PD	P 12M	P 18M	HM	HM 4M	L.G.T.	AOL	GD
D.E.P	0.2	2.7	4.3	2.2	2.1	1.0	1.4	0.8	0.1
EXA (%)	24	21	20	20	18	19		18	18

Avg. Daily Weight Gain (g)	986
Avg. Birth Weight (Kg)	35
Avg. Weaning Weight (Kg)	274
Avg. Yearling Weight (Kg)	457
Avg. Mature Body Weight (Kg)	1,006
Avg. Height of Mature Animals (cm)	145
Avg. Carcase Yield (Kg)	627
Avg. Dressing Percentage (%)	57

BOVINOMETRY DIAGRAM BULL



FIGHTER



Fighter ***Breed: Spanish***

The Fighter is a unique breed of Spain. Very good in structure and short face.

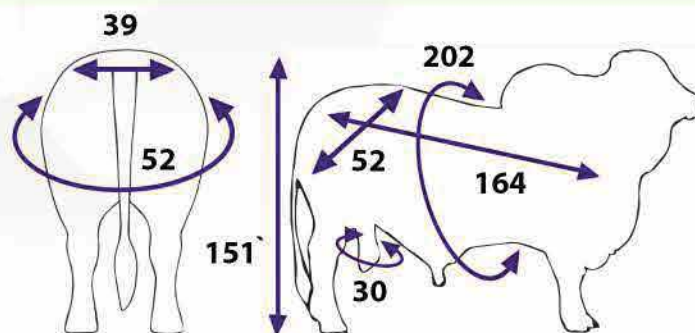
www.qaziscattle.com

GENETIC EVALUATION 2019 - ASOCEBU COLOMBIA

	PN	PD	P 12M	P 18M	HM	HM 4M	L.G.T.	AOL	GD
D.E.R	0.2	2.7	4.3	2.2	2.1	1.0	1.4	0.8	0.1
EXA (%)	24	21	20	20	18	19		18	18

Avg. Daily Weight Gain (g)	986
Avg. Birth Weight (Kg)	35
Avg. Weaning Weight (Kg)	274
Avg. Yearling Weight (Kg)	457
Avg. Mature Body Weight (Kg)	1,006
Avg. Height of Mature Animals (cm)	145
Avg. Carcase Yield (Kg)	627
Avg. Dressing Percentage (%)	57

BOVINOMETRY DIAGRAM BULL



GORILLA



GORILLA

Breed: Angus

Gorilla is a black angus Bull. Having excellent structure. beautiful short face

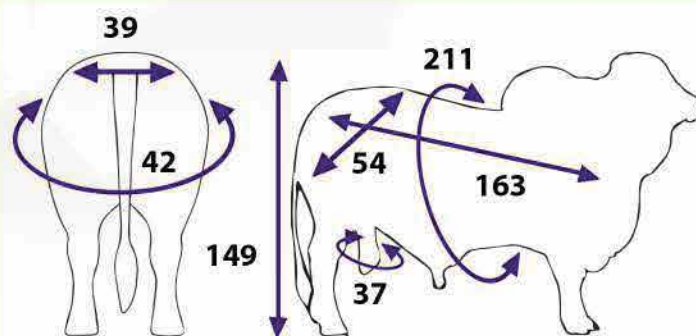
www.qaziscattle.com

GENETIC EVALUATION 2019 - ASOCEBU COLOMBIA

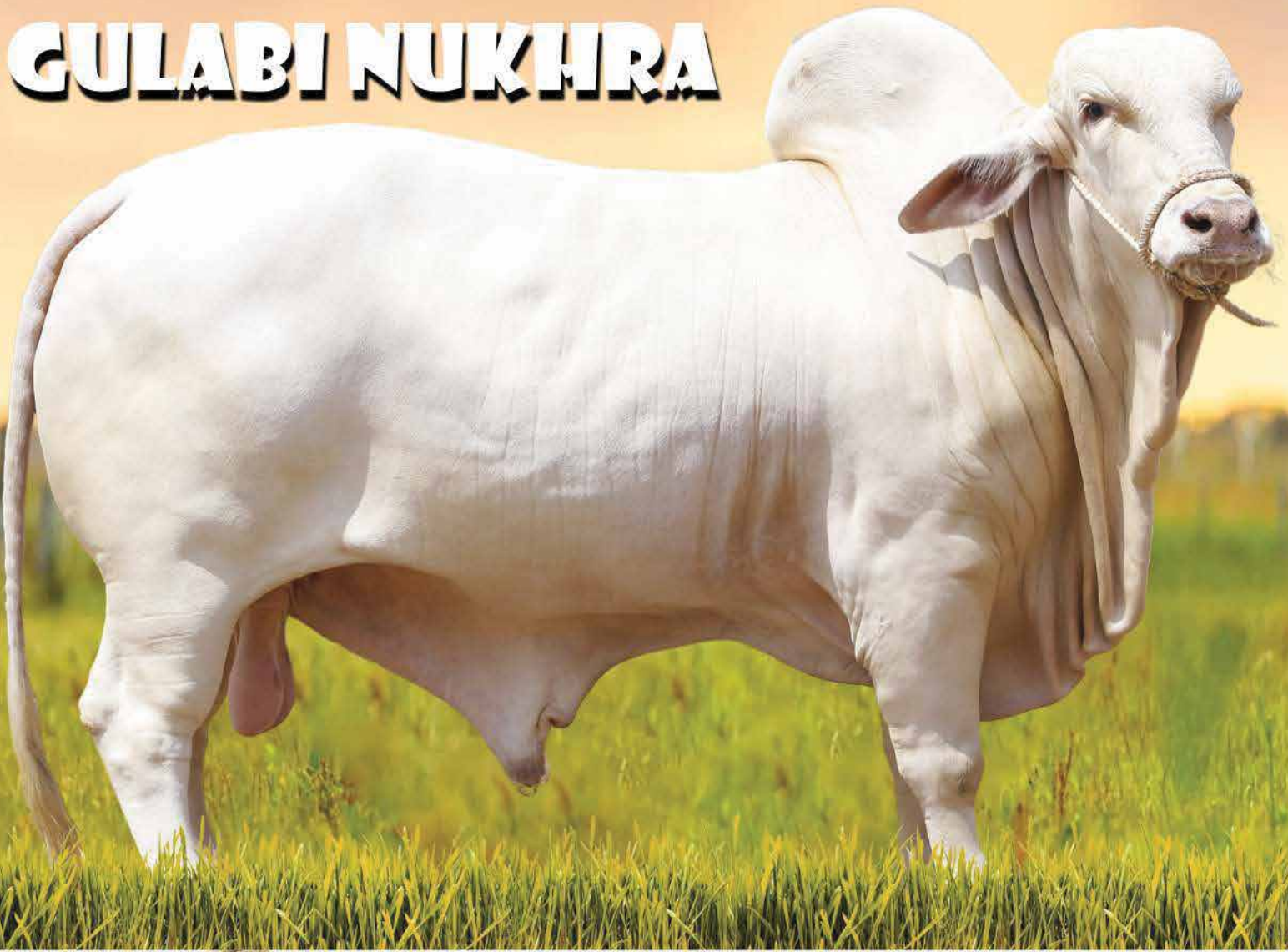
	PN	PD	P 12M	P 18M	HM	HM 4M	L.G.T.	AOL	GD
D.E.P	0.2	2.7	4.3	2.2	2.1	1.0	1.4	0.8	0.1
EXA (%)	24	21	20	20	18	19		18	18

Avg. Daily Weight Gain (g)	986
Avg. Birth Weight (Kg)	35
Avg. Weaning Weight (Kg)	274
Avg. Yearling Weight (Kg)	457
Avg. Mature Body Weight (Kg)	1,006
Avg. Height of Mature Animals (cm)	145
Avg. Carcase Yield (Kg)	627
Avg. Dressing Percentage (%)	57

BOVINOMETRY DIAGRAM BULL



GULABI NUKHRA



Gulabi Nukhra

Breed: Cholistan Gulabi Nukra

As the name describes its quality. The gulabi nukra is beautiful white pink nose with excellent body structure.

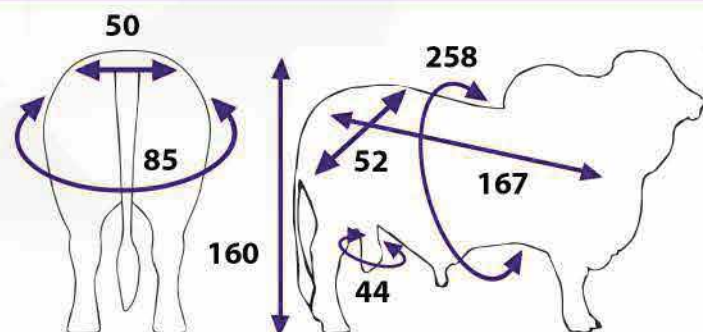
www.qaziscattle.com

GENETIC EVALUATION 2019 - ASOCEBU COLOMBIA

	PN	PD	P 12M	P 18M	HM	HM 4M	L.G.T.	AOL	GD
D.E.R.	0.2	5.7	4.3	3.2	2.1	1.0	1.4	0.8	0.1
EXA (%)	24	21	20	20	18	19		18	18

Avg. Daily Weight Gain (g)	986
Avg. Birth Weight (Kg)	35
Avg. Weaning Weight (Kg)	274
Avg. Yearling Weight (Kg)	457
Avg. Mature Body Weight (Kg)	1,006
Avg. Height of Mature Animals (cm)	145
Avg. Carcase Yield (Kg)	627
Avg. Dressing Percentage (%)	57

BOVINOMETRY DIAGRAM BULL



LADLA



Ladla

Breed: Slugger Brahman Blood Line

Ladla is a beautiful bull. From the blood line of slugger bull. Born from desi gulabi cow and slugger is pink nose and huge hump make him more beautiful



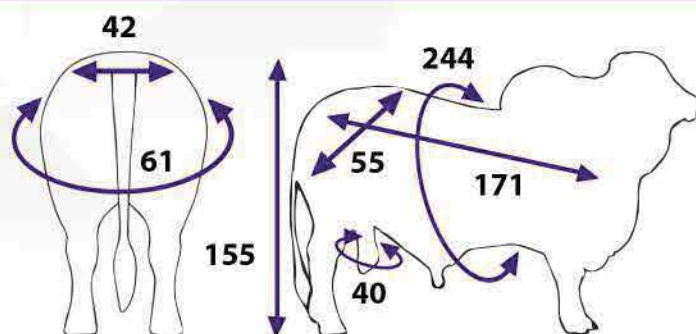
www.qaziscattle.com

GENETIC EVALUATION 2019 - ASOCEBU COLOMBIA

	PN	PD	P 12M	P 18M	HM	HM 4M	L.G.T.	AOL	GD
D.E.R	0.2	2.7	4.3	2.2	2.1	1.0	1.4	0.8	0.1
EXA (%)	24	21	20	20	18	19		18	18

Avg. Daily Weight Gain (g)	986
Avg. Birth Weight (Kg)	35
Avg. Weaning Weight (Kg)	274
Avg. Yearling Weight (Kg)	457
Avg. Mature Body Weight (Kg)	1,006
Avg. Height of Mature Animals (cm)	145
Avg. Carcase Yield (Kg)	627
Avg. Dressing Percentage (%)	57

BOVINOMETRY DIAGRAM BULL



LALU



Lalu

Breed: Beez Master

Lalu is a red/brown bull of beez master breed. It has strong body structure. Heavy weight and loose skin.

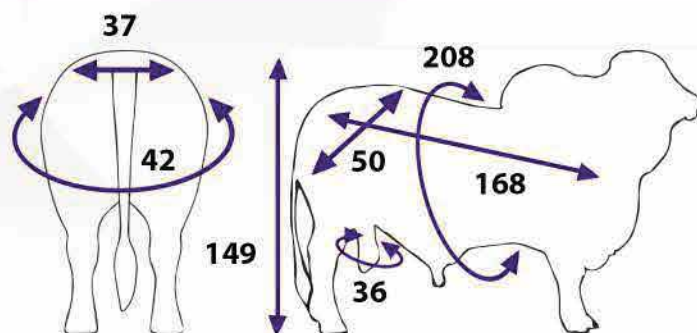
www.qaziscattle.com

GENETIC EVALUATION 2019 - ASOCEBU COLOMBIA

	PN	PD	P 12M	P 18M	HM	HM 4M	L.G.T.	AOL	GD
D.E.R	0.2	2.7	4.3	2.2	2.1	1.0	1.4	0.8	0.1
EXA (%)	24	21	20	20	18	19		18	18

Avg. Daily Weight Gain (g)	986
Avg. Birth Weight (Kg)	35
Avg. Weaning Weight (Kg)	274
Avg. Yearling Weight (Kg)	457
Avg. Mature Body Weight (Kg)	1,006
Avg. Height of Mature Animals (cm)	145
Avg. Carcase Yield (Kg)	627
Avg. Dressing Percentage (%)	57

BOVINOMETRY DIAGRAM BULL



LC 22/7



LC 22/7

Breed: Monso Blood Line

LC22/7 imported
from BRC RANCH

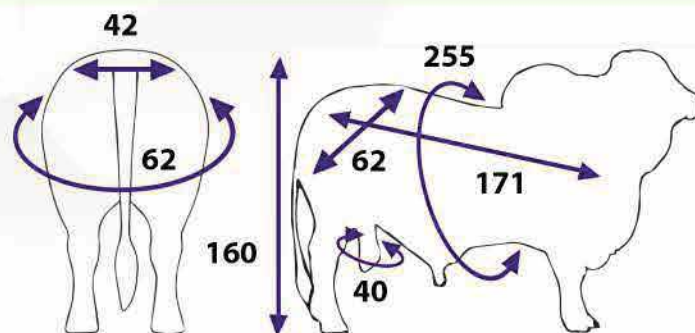
www.qaziscattle.com

GENETIC EVALUATION 2019 - ASOCEBU COLOMBIA

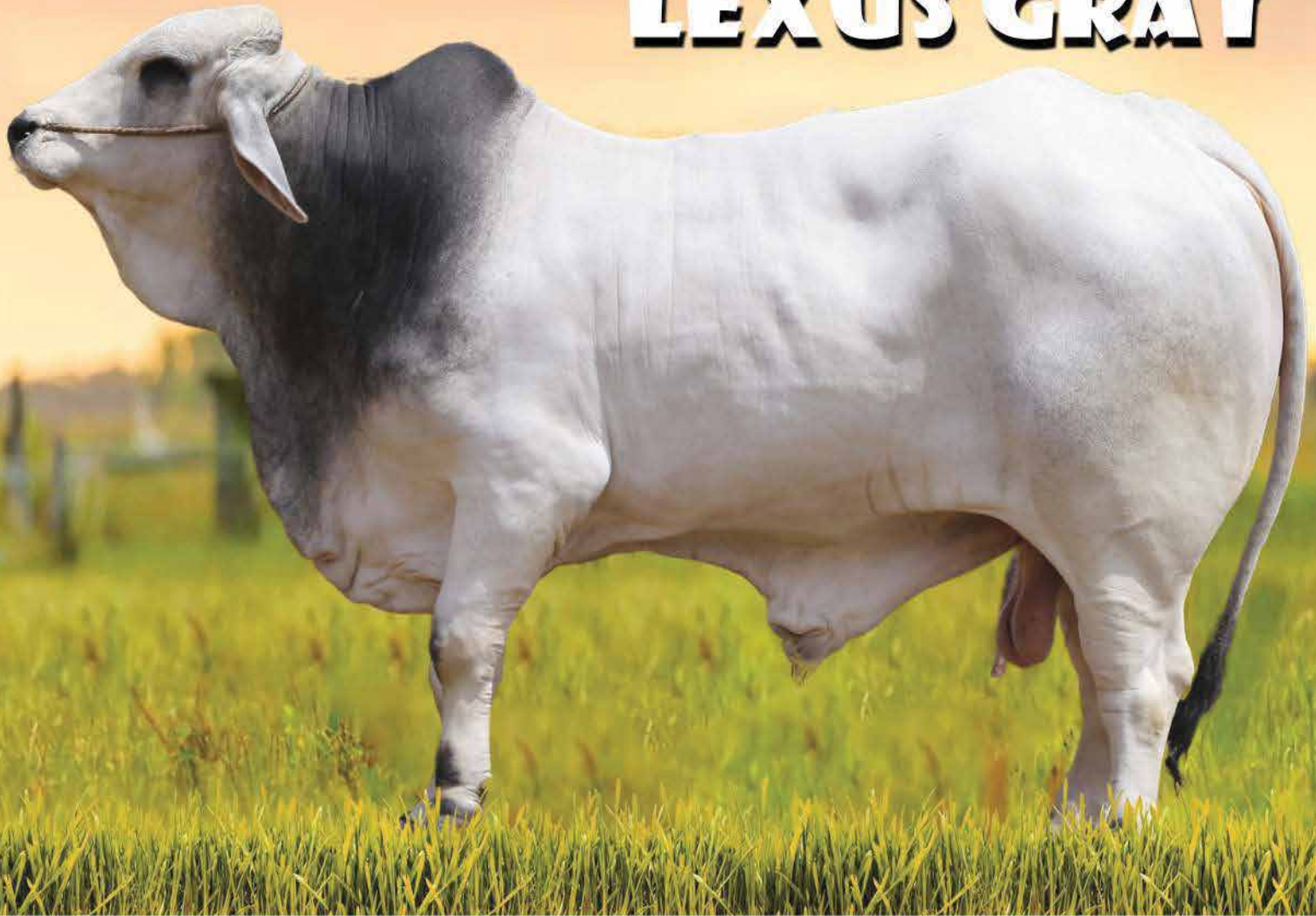
	PN	PD	P 12M	P 18M	HM	HM 4M	L.G.T.	AOL	GD
D.E.R	0.2	2.7	4.3	2.2	2.1	1.0	1.4	0.8	0.1
EXA (%)	24	21	20	20	18	19		18	18

Avg. Daily Weight Gain (g)	986
Avg. Birth Weight (Kg)	35
Avg. Weaning Weight (Kg)	274
Avg. Yearling Weight (Kg)	457
Avg. Mature Body Weight (Kg)	1,006
Avg. Height of Mature Animals (cm)	145
Avg. Carcase Yield (Kg)	627
Avg. Dressing Percentage (%)	57

BOVINOMETRY DIAGRAM BULL



LEXUS GRAY



LEXUS GRAY

Breed: V8 Bull

Lexus has a strong joints, Long height and heavy structure.

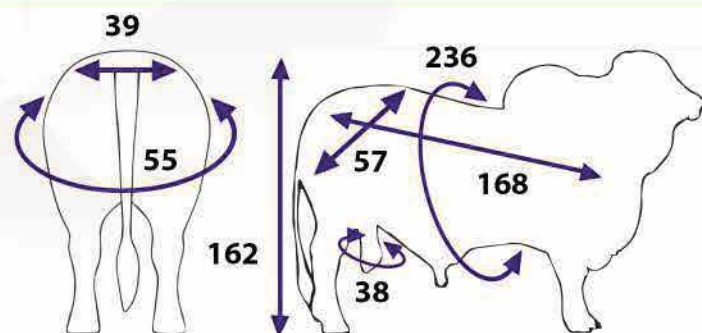
www.qaziscattle.com

GENETIC EVALUATION 2019 - ASOCEBU COLOMBIA

	PN	PD	P 12M	P 18M	HM	HM 4M	L.G.T.	AOL	GD
D.E.R	0.2	5.7	4.3	2.2	2.1	1.0	1.4	0.8	0.1
EXA (%)	24	21	20	20	18	19		18	18

Avg. Daily Weight Gain (g)	986
Avg. Birth Weight (Kg)	35
Avg. Weaning Weight (Kg)	274
Avg. Yearling Weight (Kg)	457
Avg. Mature Body Weight (Kg)	1,006
Avg. Height of Mature Animals (cm)	145
Avg. Carcase Yield (Kg)	627
Avg. Dressing Percentage (%)	57

BOVINOMETRY DIAGRAM BULL



ROCKY



Rocky Breed: Appachi 1/50

Rocky is from the blood line of appachi. Huge structure perfect joints and big hump are the qualities of appachi 1/50

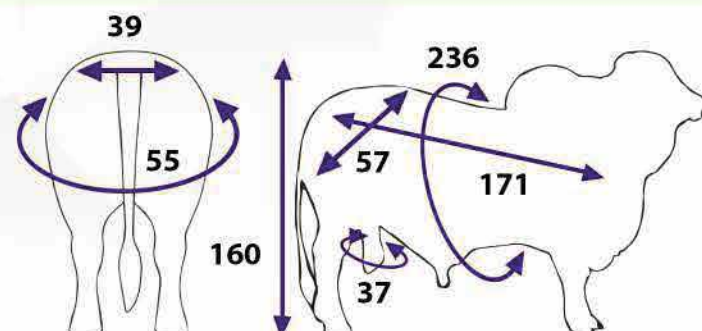
www.qaziscattle.com

GENETIC EVALUATION 2019 - ASOCEBU COLOMBIA

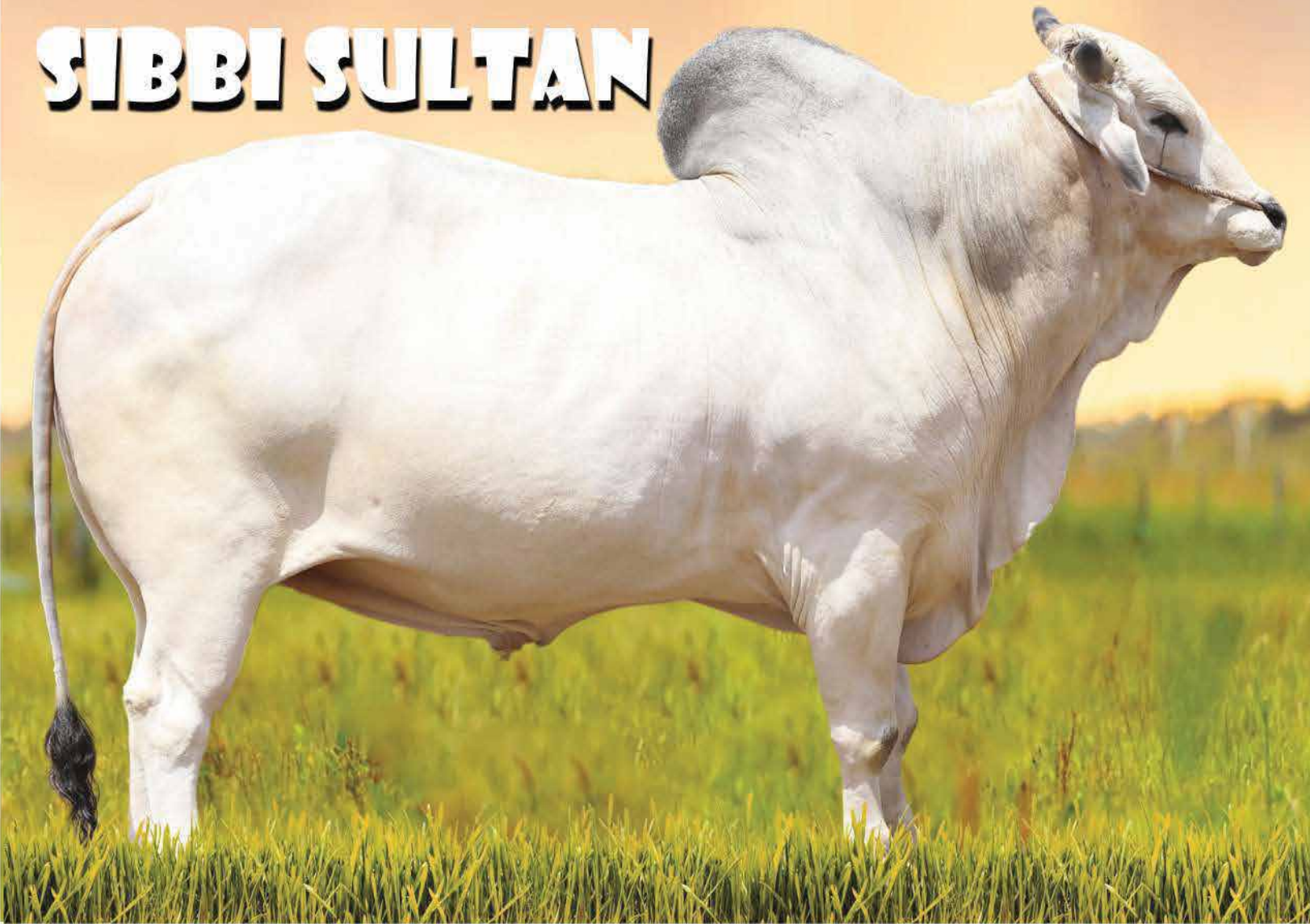
	PN	PD	P 12M	P 18M	HM	HM 4M	L.G.T.	AOL	GD
D.E.R	0.2	2.7	4.3	2.2	2.1	1.0	1.4	0.8	0.1
EXA (%)	24	21	20	20	18	19		18	18

Avg. Daily Weight Gain (g)	986
Avg. Birth Weight (Kg)	35
Avg. Weaning Weight (Kg)	274
Avg. Yearling Weight (Kg)	457
Avg. Mature Body Weight (Kg)	1,006
Avg. Height of Mature Animals (cm)	145
Avg. Carcase Yield (Kg)	627
Avg. Dressing Percentage (%)	57

BOVINOMETRY DIAGRAM BULL



SIBBI SULTAN



Sibbi Sultan

Breed: Sibbi Bhagnari

Sibbi is famous Pakistani breed well known for his tall height and huge hump

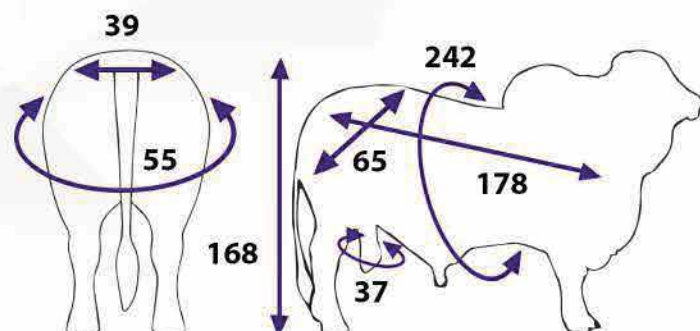
www.qaziscattle.com

GENETIC EVALUATION 2019 - ASOCEBU COLOMBIA

	PN	PD	P 12M	P 18M	HM	HM 4M	L.G.T.	AOL	GD
D.E.R	0.2	2.7	4.3	2.2	2.1	1.0	1.4	0.8	0.1
EXA (%)	24	21	20	20	18	19		18	18

Avg. Daily Weight Gain (g)	986
Avg. Birth Weight (Kg)	35
Avg. Weaning Weight (Kg)	274
Avg. Yearling Weight (Kg)	457
Avg. Mature Body Weight (Kg)	1,006
Avg. Height of Mature Animals (cm)	145
Avg. Carcase Yield (Kg)	627
Avg. Dressing Percentage (%)	57

BOVINOMETRY DIAGRAM BULL



WHITE ELEPHANT Jr



WHITE ELEPHANT Jr BREED: GULABI CROSS

Whitye Elephant Jr is son of white Elephant with strong structure.

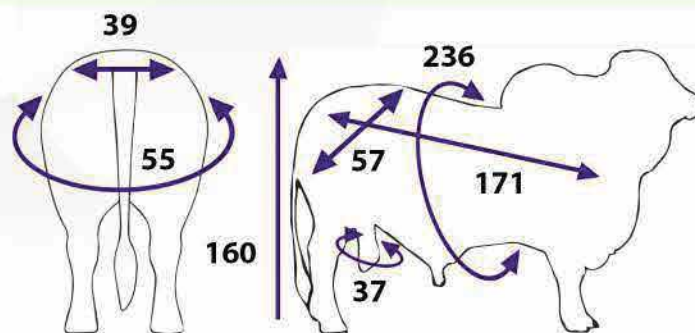
www.qaziscattlefarm.com

GENETIC EVALUATION 2019 - ASOCEBU COLOMBIA

	PN	PD	P 12M	P 18M	HM	HM 4M	L.G.T.	AOL	GD
D.E.R	0.2	2.7	4.3	2.2	2.1	1.0	1.4	0.8	0.1
EXA (%)	24	21	20	20	18	19		18	18

Avg. Daily Weight Gain (g)	986
Avg. Birth Weight (Kg)	35
Avg. Weaning Weight (Kg)	274
Avg. Yearling Weight (Kg)	457
Avg. Mature Body Weight (Kg)	1,006
Avg. Height of Mature Animals (cm)	145
Avg. Carcase Yield (Kg)	627
Avg. Dressing Percentage (%)	57

BOVINOMETRY DIAGRAM BULL



SUNDAR



Sundar Breed: Sibbi Nukra

As everyone know sibbi is well known Pakistani breed originated from balochi stan coast. This bull is famous for its tall height as well pink nose.



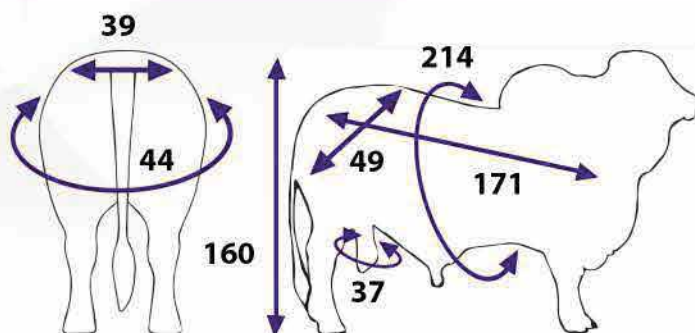
www.qaziscattle.com

GENETIC EVALUATION 2019 - ASOCEBU COLOMBIA

	PN	PD	P 12M	P 18M	HM	HM 4M	L.G.T.	AOL	GD
D.E.R	0.2	2.7	4.3	2.2	2.1	1.0	1.4	0.8	0.1
EXA (%)	24	21	20	20	18	19		18	18

Avg. Daily Weight Gain (g)	986
Avg. Birth Weight (Kg)	35
Avg. Weaning Weight (Kg)	274
Avg. Yearling Weight (Kg)	457
Avg. Mature Body Weight (Kg)	1,006
Avg. Height of Mature Animals (cm)	145
Avg. Carcase Yield (Kg)	627
Avg. Dressing Percentage (%)	57

BOVINOMETRY DIAGRAM BULL



TAURAS



Tauras ***Breed: Red Angus***

Tauras is imported from australia. Long in length and height. Pure blood line.

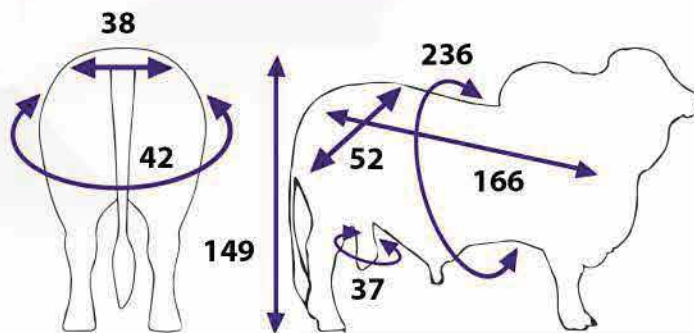
www.qaziscattle.com

GENETIC EVALUATION 2019 - ASOCEBU COLOMBIA

	PN	PD	P 12M	P 18M	HM	HM 4M	L.G.T.	AOL	GD
D.E.R	0.2	2.7	4.3	2.2	2.1	1.0	1.4	0.8	0.1
EXA (%)	24	21	20	20	18	19		18	18

Avg. Daily Weight Gain (g)	986
Avg. Birth Weight (Kg)	35
Avg. Weaning Weight (Kg)	274
Avg. Yearling Weight (Kg)	457
Avg. Mature Body Weight (Kg)	1,006
Avg. Height of Mature Animals (cm)	145
Avg. Carcase Yield (Kg)	627
Avg. Dressing Percentage (%)	57

BOVINOMETRY DIAGRAM BULL



WHITE ELEPHANT



White Elephant

Breed: Cross Breed

White elephant male cross breed in pink nose and black white print. Beautiful structure semen results of this bull are outstanding

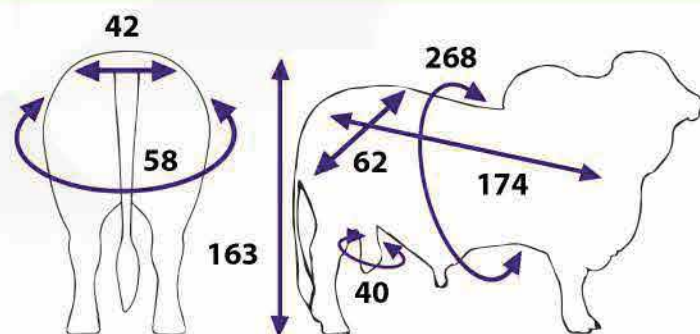
www.qaziscattle.com

GENETIC EVALUATION 2019 - ASOCEBU COLOMBIA

	PN	PD	P 12M	P 18M	HM	HM 4M	L.G.T.	AOL	GD
D.E.R.	0.2	2.7	4.3	2.2	2.1	1.0	1.4	0.8	0.1
EXA (%)	24	21	20	20	18	19		18	18

Avg. Daily Weight Gain (g)	986
Avg. Birth Weight (Kg)	35
Avg. Weaning Weight (Kg)	274
Avg. Yearling Weight (Kg)	457
Avg. Mature Body Weight (Kg)	1,006
Avg. Height of Mature Animals (cm)	145
Avg. Carcase Yield (Kg)	627
Avg. Dressing Percentage (%)	57

BOVINOMETRY DIAGRAM BULL



PUKHRAJ

QURBANI
LOVERS



PUKHRAJ

Breed: F2 Brahman (75% Brahman, 25% Ablak Cholistani)

Sire: Rojo Grande 4/95 (Pure Brahman)

Dam: F1 Brahman (50% Brahman & 50% Ablak Cholistani)

Color: Brownish, Black & White coat pattern with a pink nose

Traits: Strong build, heat-resistant, high fertility, ideal for crossbreeding

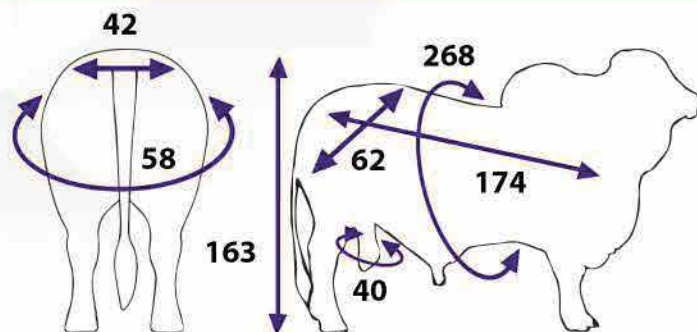
www.qaziscattle.com

GENETIC EVALUATION 2019 - ASOCEBU COLOMBIA

	PN	PD	P 12M	P 18M	HM	HM 4M	L.G.T.	AOL	GD
D.E.R	0.2	2.7	4.3	2.2	2.1	1.0	1.4	0.8	0.1
EXA (%)	24	21	20	20	18	19		18	18

Avg. Daily Weight Gain (g)	986
Avg. Birth Weight (Kg)	35
Avg. Weaning Weight (Kg)	274
Avg. Yearling Weight (Kg)	457
Avg. Mature Body Weight (Kg)	1,006
Avg. Height of Mature Animals (cm)	145
Avg. Carcase Yield (Kg)	627
Avg. Dressing Percentage (%)	57

BOVINOMETRY DIAGRAM BULL





Qazi's Cattle Farm was founded in 2020 with the passion and love for Cattles but this was not out of the blue, this was the result of a Dream. The primary aim is to contribute in Pakistan's Cattle industry and livestock.

To date Qazi's Cattle Farm is the fastest growing in the cattle industry and in the breeding sector. Our focus is to promote breeding, for this purpose we import pure Brahman, Red Angus and Black Brangus bulls.. As well As we have the Results of interntional semens which we Achieved at our farm , their offspring bull's semens are also included and available in this catalogue